

20
26

ROSE CATALOG





easy elegance[®]

ROSES YOU CAN GROW[™]

**FRESH LOOK. FRESH APPROACH.
STREAMLINED ASSORTMENT: BRINGING YOU THE BEST OF THE BEST.**

Bred for season-long flowers, disease resistance, and a wide array of bloom colors and shrub forms, Easy Elegance[®] offers the best-in-class Roses You Can Grow[™]. Whether you're looking for a low-growing shrub, a classic red rose, or a larger shrub to add mass to the landscape, we've got you covered.

We've spent the last couple of years doing research, learning from home gardeners what inspires them and what drives purchases for roses. And we've taken their input and given the brand a refresh to match our forward-thinking, accessible, and exciting rose collection.

At the end of the day, we're here to help you sell more roses. From our trialed and tested genetics, current market research, and active marketing support, Easy Elegance[®] should be your go-to rose collection. Because with Easy Elegance[®], we build confidence using Roses You Can Grow[™].

TABLE OF CONTENTS

4. About the Brand
6. Research Findings
8. Creative Evolution
9. The Roses
18. In the Landscape
20. How to Use
21. Growers
22. Partnering with Easy Elegance[®]



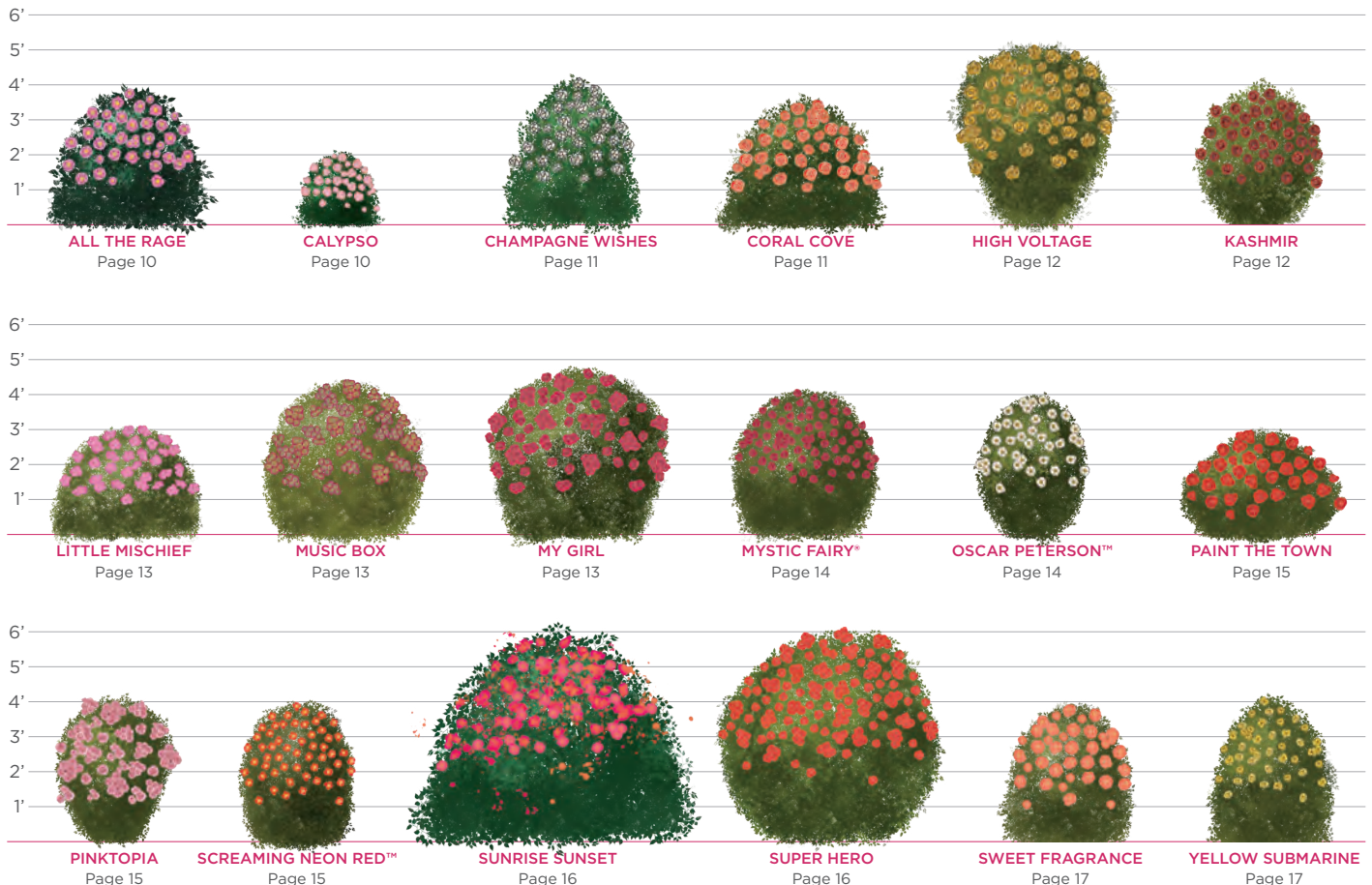
WHAT MAKES AN EASY ELEGANCE® ROSE?

There is a lot of excitement around shrub roses, particularly among younger and newer gardeners. They are looking for colorful shrubs to fill out their landscape, and love the nostalgia and beauty of roses. But they're looking for a modern solution to fulfill that desire; Roses that are easy-care, bloom like crazy, and fit into different areas of their yard.

And that's where Easy Elegance® stands apart.

ONE SIZE DOES NOT FIT ALL

Versatility is crucial for landscapers and home gardeners. Having a solution for any location is necessary to keep a plant collection relevant and useful. We've been intentional about selecting varieties that accomplish any task: low growers to act as groundcovers, compact selections for a border, upright vase-shaped shrubs to mimic a hybrid tea rose, and larger selections to serve as a focal point or refined hedge. Easy Elegance® roses give you the option to utilize this much-love shrub in any design.



REGIONAL HIGHLIGHTS

Easy Elegance® roses were specifically bred with regional performance in mind. Years of production and in-ground trials have helped us create a list of warm- and cold-climate favorites. If you're looking for a place to start, it's here:

COLD CLIMATE

Zones 3-5



ALL THE RAGE
Zone: 4-9



MUSIC BOX
Zone: 4-9



OSCAR PETERSON™
Zone: 3-8



PAINT THE TOWN
Zone: 4-9

WARM CLIMATE

Zones 6-9



HIGH VOLTAGE
Zone: 4-9



KASHMIR
Zone: 4-9



MY GIRL
Zone: 4-9



SUNRISE SUNSET
Zone: 4-9

IT'S ABOUT THE CULTURE

Great plants start with great genetics.

And these were all bred with purpose: cold tolerance, disease resistance, and low maintenance. Now, these roses can't just survive in cold climates; they have to thrive. These plants are genetically adapted to be more cane and bud hardy, giving cold-climate gardeners color earlier in the season without worrying about dieback.

On the flip side, their incredible disease resistance allows them to grow in warm climates without the worry of black spot or foliar diseases prevalent in other roses. All of this adds up to less maintenance for the home gardener, which is a must!



Kashmir Rose showcasing clean foliage, even in October.



DIGGING DEEPER

Keeping current on end-user goals, desires, and perceptions - especially with a legacy species like roses - is important. We knew it was time to do some research and be sure Easy Elegance® stays at the forefront of the rose category, while being a relevant part of the overall landscape conversation.

So, we partnered with a national research organization and our external strategic consumer marketing agency and dug in!

WHAT WERE OUR GOALS?

- Understand current perceptions (including expectations, strengths, and opportunities related to this category and more specifically Easy Elegance® Roses.
- Gather insights to further inform the Easy Elegance® Roses target market(s).
- Quantify expectations, needs, and perceptions around flower gardening, rose gardening, and specifically Easy Elegance® Roses.
- Determine a need for a possible repositioning of the brand.

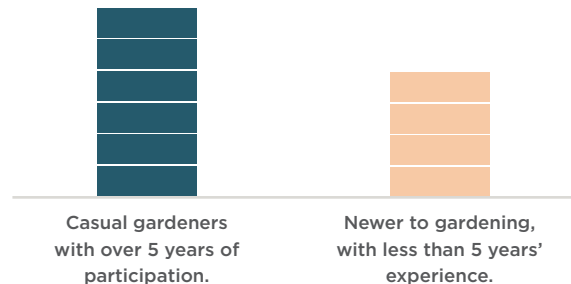
WHO DID WE TALK TO?

300 consumers within 3 key audience segments:

- Easy Elegance® past purchasers (30%)
- Engaged gardeners (35%)
- Casual gardeners (35%)

Their experience level:

- Participates in container gardening (88%)
- Participates in gardening with flowering plants (81%)





67%
OF RESPONDENTS
PLANT ROSES TO
CREATE A MORE
BEAUTIFUL SPACE

34%
EXPLAINED THEY FIND
GARDENING WITH
THESE SHRUBS TO BE
REWARDING, RELAXING,
AND ENJOYABLE

96%
OF PREVIOUS PURCHASERS
OF EASY ELEGANCE® ROSES
WERE SATISFIED WITH
THE PRODUCT

81%
OF ROSE GARDENERS
SELECTED COLD HARDINESS
AND/OR HEAT TOLERANCE
AS VERY IMPORTANT
OR IMPORTANT

85%
OF PAST PURCHASERS
ARE LIKELY TO
PURCHASE ANOTHER
EASY ELEGANCE® ROSE

OPPORTUNITIES

- **64%** of gardeners have 2 or fewer roses in their yard, but there's interest in adding more, providing huge market opportunity.
- Almost half said they purchase rose plants at least once per year.
- Only **10%** of gardeners thought to plant shrub roses in decorative containers, yet **88%** garden in pots, providing lots of room to grow with the right inspiration.
- Respondents appreciated the mix of colors, shapes, and flower variation in the collection, but also appreciate a more distilled list of "best of the best" for different scenarios.



Super Hero Rose

PACKAGING EVOLUTION

The research feedback showed that consumers liked the red pot and logo, so we wanted to embrace that. But to make it stand out a bit more and keep the brand fresh, we updated the packaging to a brighter red color. Not only does it make the visual more dynamic, but also helps it stand out at the retail garden center.

In addition to the visual updates, we added the Roses You Can Grow™ tagline to show in lockup with the Easy Elegance® logo. The research showed that home gardeners want to be confident in growing roses and are looking for low maintenance shrubs that add beauty to the landscape. This tagline resonates well and supports those key insights, boosting the end user's confidence in the product from the get-go!

easy
elegance®



easy
elegance®
ROSES YOU CAN GROW™



FEATURING THE VERY BEST

While survey participants appreciated the variety of plants within the Easy Elegance® collection, they also shared the desire for easy selection. So, our team went to work and reviewed the best-of-the best for color, size and shape, and regional performance and curated a more targeted product list to still provide great diversity while taking away the guesswork of which variety to choose.

88%

OF THOSE SURVEYED WERE INTERESTED IN LEARNING MORE OR PURCHASING EASY ELEGANCE® ROSES AFTER SEEING A PRODUCT IMAGE AND REVIEWING THE BRAND PROMISE

- “Easy to grow” and “fuss-proof” were two characteristics that resonated most, followed by “blooms spring to frost” and “naturally disease resistant”.
- Respondents like the brand name and feel it’s descriptive of the collection, and the “easy, elegant” descriptors were validated by past purchasers.

the plants.



ALL THE RAGE

Rosa 'BAIrage' PP19,945

All the Rage is a delightful, hardy, multi-colored shrub rose that blooms steadily all season, providing a range of colors to enjoy. The blooms age to lipstick pink before cleanly dropping away, keeping the landscape looking fresh. A compact size and round form make this rose suitable for various landscape settings.

Class Shrub Rose

Color Apricot Blend

Bloom Cycle Everblooming

Flower Form & Size Semi-double, 3-4"

USDA Hardiness Zone 4-9

Height 3-5'

Width 2-4.5'

Petal Count 10-12

Exposure Full Sun

AHS Heat Zone 8

All the Rage is disease resistant and performs well in cool and warm climates.



CALYPSO

Rosa 'BAlypso'

Calypso is a compact, mounded shrub rose that is covered in repeat-blooming apricot flowers, bringing color to the landscape throughout the season. The soft color of the petals contrasts beautifully with the glossy disease-resistant foliage. With its compact size, Calypso is an ideal accent in a garden or foundation planting.

Class Shrub Rose

Color Apricot Blend

Bloom Cycle Recurrent

Flower Form & Size Double, 2.5"

USDA Hardiness Zone 5-9

Height 2'

Width 2'

Petal Count 25

Exposure Full Sun

AHS Heat Zone 9

Calypso is an ideal accent in a garden or foundation planting.



CHAMPAGNE WISHES

Rosa 'BAICham'

Soft apricot buds open to reveal antique white blooms on this hardy shrub rose. Champagne Wishes' blooms contrast beautifully with the medium green foliage, looking spectacular when paired with perennials in mixed borders, and its compact size is perfect for low hedges. Champagne Wishes features repeat blooms on a disease resistant, low maintenance plant.

Class Shrub Rose
Color White
Bloom Cycle Recurrent
Flower Form & Size Full, 3"
USDA Hardiness Zone 4-7

Height 3-4'
Width 2-3'
Petal Count 24-31
Exposure Full Sun
AHS Heat Zone 7



Champagne Wishes was named the 2017 Best Rose Winner by the Portland Rose Society.

CORAL COVE

Rosa 'BALove'

Incredible color, petite size, and incredible disease resistance - what more could you want from a rose? Coral Cove is an everblooming shrub rose with double blooms whose outer petals are dark pink that change to orange and finally to bright yellow at the center. The small, perfectly rounded form makes Coral Cove an outstanding informal hedge along a walkway or garden path and is excellent in mixed perennial plantings.

Class Shrub Rose
Color Orange-Pink Blend
Bloom Cycle Everblooming
Flower Form & Size Double, 3"
USDA Hardiness Zone 4-9

Height 2-3.5'
Width 2-4.5'
Petal Count 20
Exposure Full Sun
AHS Heat Zone 8



Coral Cove was named the 2014 Best Shrub Rose by the Portland Rose Society.



HIGH VOLTAGE

Rosa 'BALage'

High Voltage shocks with beautiful clusters of double yellow blossoms held high on sturdy stems. Its incredibly clean foliage complements the fragrant blooms, creating a fresh feeling in the landscape. This shrub rose grows in an upright, vase shape, making it a perfect plant for the back of a border or stand out shrub.

Class Shrub Rose

Color Medium Yellow

Bloom Cycle Recurrent

Flower Form & Size Double, 2-3"

USDA Hardiness Zone 4-9

Height 4-5'

Width 2-4'

Petal Count 22

Exposure Full Sun

AHS Heat Zone 8



Portland Rose Society named High Voltage the Best Shrub Rose in 2010.



KASHMIR

Rosa 'BALmir'

Kashmir is an easy-care shrub rose with the look of the classic hybrid tea without any of the hassle. Its velvety red blossoms are as soft as cashmere and beg to be cut for the vase. With an evenly rounded habit, Kashmir fits perfectly as a bold accent plant in the border, in a foundation planting, or as a low hedge, hugging paths and walkways.

Class Shrub Rose

Color Red

Bloom Cycle Recurrent

Flower Form & Size Very Full, 3"

USDA Hardiness Zone 4-9

Height 3-4'

Width 2-3'

Petal Count 50

Exposure Full Sun

AHS Heat Zone 8



American Rose Trials for Sustainability® Winner

LITTLE MISCHIEF

Rosa 'BAIief' PP17,196

Little Mischief is one of the most popular roses in the Easy Elegance® Collection for a reason. It is consistent, hardy, disease resistant and everblooming, filling the landscape with color all season long. The new blooms on this rose are deep pink with a white eye, and contrast wonderfully with the older, light pink blooms. Its foliage is a glossy green and remains free of disease throughout the season.

Class Shrub Rose

Color Deep Pink

Bloom Cycle Everblooming

Flower Form & Size Double, 1"

USDA Hardiness Zone 4-9

Height 2-3'

Width 2-4'

Petal Count 19-24

Exposure Full Sun

AHS Heat Zone 8



Low-growing, Little Mischief is a wonderful companion plant in a border, hedge, or decorative container.



American Rose Trials for Sustainability® Winner

MUSIC BOX

Rosa 'BAIbox'

Music Box boasts everblooming double blossoms with creamy yellow centers surrounded by delicate pink blends. Glossy medium foliage accompanies the beautiful flowers, making an ideal accent shrub for any garden. This rose is disease resistant and grows on its own root.

Class Shrub Rose

Color Yellow Blend

Bloom Cycle Everblooming

Flower Form & Size Double, 2"

USDA Hardiness Zone 4-9

Height 3-5.5'

Width 3-4.5'

Petal Count 30-35

Exposure Full Sun

AHS Heat Zone 9

MY GIRL

Rosa 'BAIgirl' PP19,952

The adorable, round, deep pink buds on My Girl Rose are held in clusters of 5 to 30, opening to ruffly blossoms so full they almost hide the centers. This shrub rose is backed by medium green foliage, proven to be highly resistant to black spot with little to no defoliation. My Girl is compact with an upright habit and good repeat bloom.

Class Shrub Rose

Color Deep Pink

Bloom Cycle Recurrent

Flower Form & Size Full, 2-3"

USDA Hardiness Zone 4-9

Height 3-5'

Width 3.5-5'

Petal Count 28-30

Exposure Full Sun

AHS Heat Zone 8



My Girl makes a dazzling color statement in borders and performs well in both cooler and warmer regions.



MYSTIC FAIRY®

Rosa 'BAIfairy' PP16,131

Irresistible blooms of rich red with pink undertones carpet Mystic Fairy® Rose in massive clusters all summer long. New foliage is glossy red, which slowly gives way to dark green mature leaves, a striking complement to the blooms. This compact, vigorous shrub rose is resistant to blackspot and mildew, while being hardy to Zone 4.

Class Shrub Rose

Color Red Blend

Bloom Cycle Everblooming

Flower Form & Size Full, 2"

USDA Hardiness Zone 4-9

Height 3-4'

Width 3-4'

Petal Count 27

Exposure Full Sun

AHS Heat Zone 8

The flowers are sterile, allowing the plant to bloom continuously.



OSCAR PETERSON™

Rosa 'AAC333'

Bred in Canada, and named after the famous Canadian jazz pianist and composer Oscar Peterson, this rose is not only tough, it's beautiful. Blooming from early summer through fall, the semi-double flowers start out a shade of soft yellow cream that soon turn to bright white with a contrasting center of golden yellow stamens. The flowers are arranged in sprays and the spent petals always fall cleanly from the plant. The foliage is rich dark green with excellent disease resistance. It has an upright habit, being slightly taller than wide.

Class Shrub Rose

Color Creamy White

Bloom Cycle Recurrent

Flower Form & Size Semi-Double, 3"

USDA Hardiness Zone 3-8

Height 2-4'

Width 2-3'

Petal Count 10-15

Exposure Full Sun

AHS Heat Zone 8

As an added bonus, the spent blooms form edible and decorative hips that can be made into jams and jellies.



PAINT THE TOWN

Rosa 'BALtown' PP18,060

Paint the Town has everblooming red, hybrid tea-shaped blooms that carpet this shrub rose all season long. The striking flowers are accented by disease resistant, glossy, dark green foliage. This selection is an excellent performer in cool and warm regions. Paint the Town's spreading-to-mounded shape is well suited to container gardening and border plantings.

Class Shrub Rose

Color Medium Red

Bloom Cycle Everblooming

Flower Form & Size Double, 3.5"

USDA Hardiness Zone 4-9

Height 2-3'

Width 2-4'

Petal Count 20

Exposure Full Sun

AHS Heat Zone 9

PINKTOPIA

Rosa 'BALmas'

Pinktopia has masses of repeat-blooming semi-double pink flowers surrounded by disease resistant dark green foliage. The red new growth eventually ages to dark green, creating beautiful contrast in the landscape. Maturing to roughly 4 feet in height, this rose is an ideal accent or hedge shrub.

Class Shrub Rose

Color Medium Pink

Bloom Cycle Recurrent

Flower Form & Size Semi-Double, 3"

USDA Hardiness Zone 4-9

Height 4'

Width 3'

Petal Count 10-15

Exposure Full Sun

AHS Heat Zone 8



SCREAMING NEON RED™

Rosa 'BALneon'

With intense color and superior performance, Screaming Neon Red™ is sure to be a standout in any garden. Intense neon red, wave-like repeat blooms are accented by dark green, disease-resistant foliage. In fall, the foliage on this rose turns a lovely burgundy red. With a compact shape, Screaming Neon Red™ is an excellent choice for an accent shrub or to be used in a mass planting. A true showstopper!

Class Shrub Rose

Color Medium Red

Bloom Cycle Recurrent

Flower Form & Size Single, 2-2.5"

USDA Hardiness Zone 4-9

Height 3-4'

Width 2-3'

Petal Count 4-8

Exposure Full Sun

AHS Heat Zone 8

American Rose Trials for Sustainability® winner.

Multiple award winner at Biltmore International Rose Trials.

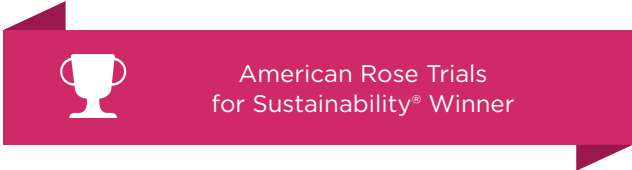


SUNRISE SUNSET

Rosa 'BAIset' PP16,770

As the name implies, Sunrise Sunset Rose is a stunning blend with bright fuchsia-pink petals melding to apricot near the center. The blue-green foliage is disease resistant, contrasting beautifully with the bright pink flowers. Its dense, spreading habit makes it an ideal ground cover and is also well suited to mass plantings. A best seller that vigorously grows on its own root, Sunrise Sunset performs extremely well in both cool and warm climates.

Class Shrub Rose	Height 3-6'
Color Pink Blend	Width 4-7'
Bloom Cycle Everblooming	Petal Count 13-19
Flower Form & Size Semi-Double, 2-2.5"	Exposure Full Sun
USDA Hardiness Zone 4-9	AHS Heat Zone 9

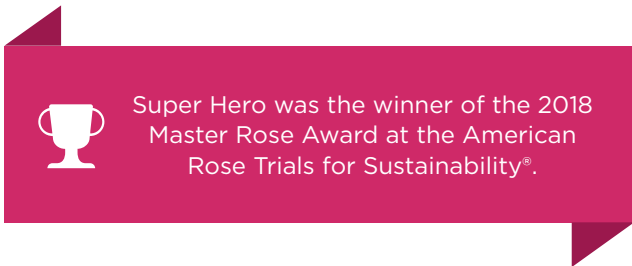


SUPER HERO

Rosa 'BAIsuhe' PP20,486

You don't have to be a superhero to grow great roses. Super Hero is a low-maintenance shrub rose that is covered in clusters of perfect, red blossoms that stand out strongly against clean, medium to dark green, satiny foliage. This neat, compact, disease-resistant shrub grows well in both cool and warm regions and is great for planting along a border or foundation.

Class Floribunda	Height 3-6'
Color Medium Red	Width 3-6'
Bloom Cycle Everblooming	Petal Count 35-40
Flower Form & Size Full, 2-3"	Exposure Full Sun
USDA Hardiness Zone 4-9	AHS Heat Zone 9



SWEET FRAGRANCE

Rosa 'BAInce' PP19,969

Sweet Fragrance has the sought after hybrid tea-shaped blooms on an easy-care shrub rose. The buds have tropical tints of coral and orange with a deep yellow base that swirl open to full, sweetly fragrant apricot blossoms. Upright growth and strong stems, paired with the hybrid tea-like flowers, make Sweet Fragrance a garden stand-out and perfect for cut arrangements. It is a vigorous grower with outstanding disease resistance.

Class Grandiflora

Color Apricot

Bloom Cycle Everblooming

Flower Form & Size Full, 3-4"

USDA Hardiness Zone 5-9

Height 2-4'

Width 2-3'

Petal Count 35

Exposure Full Sun

AHS Heat Zone 8

Perfect for cut flower arrangements because of its strong stems!



YELLOW SUBMARINE

Rosa 'BAline' PP16,659

Yellow Submarine is covered in clusters of lemon-yellow flowers that age to soft yellow and finally to white, creating a spectrum of yellows on one plant. This shrub rose grows upright and has deep green, disease resistant foliage to accent the beautiful blooms.

Class Shrub Rose

Color Medium Yellow

Bloom Cycle Recurrent

Flower Form & Size Full, 2"

USDA Hardiness Zone 5-9

Height 2-4'

Width 2-3'

Petal Count 32

Exposure Full Sun

AHS Heat Zone 8

Plant Yellow Submarine in groupings with other shrubs and perennials for a brilliant effect.



EASY ELEGANCE® IN THE LANDSCAPE: WARM REGIONS

Easy Elegance® roses look great on their own, but they also complement other plants to add a splash of color. These designs will give you ideas for how to use Easy Elegance® roses in the landscape.

Home gardeners will love the tropical feel of this landscape. As summer approaches, the floral color begins to pop. Kashmir Rose (1) features bright red blooms that resemble hybrid tea roses. At 3-4 ft, this rose adds round form to the bed, while offering beautiful contrast to Pardon Me Daylily (2).

The tropical theme continues with the coral and orange tints of Sweet Fragrance Rose (3), which is the perfect size to pair with other small shrubs and perennials. The rose foliage remains healthy all season to keep the bed looking fresh.

As summer winds down, the electric blooms of First Editions® Sapphire Surf™ Bluebeard (4) light up the ground with a carpet of color. In winter and spring, the vibrant color of First Editions® Straight & Narrow® Japanese Holly (5) bring a touch of the tropics to the landscape.

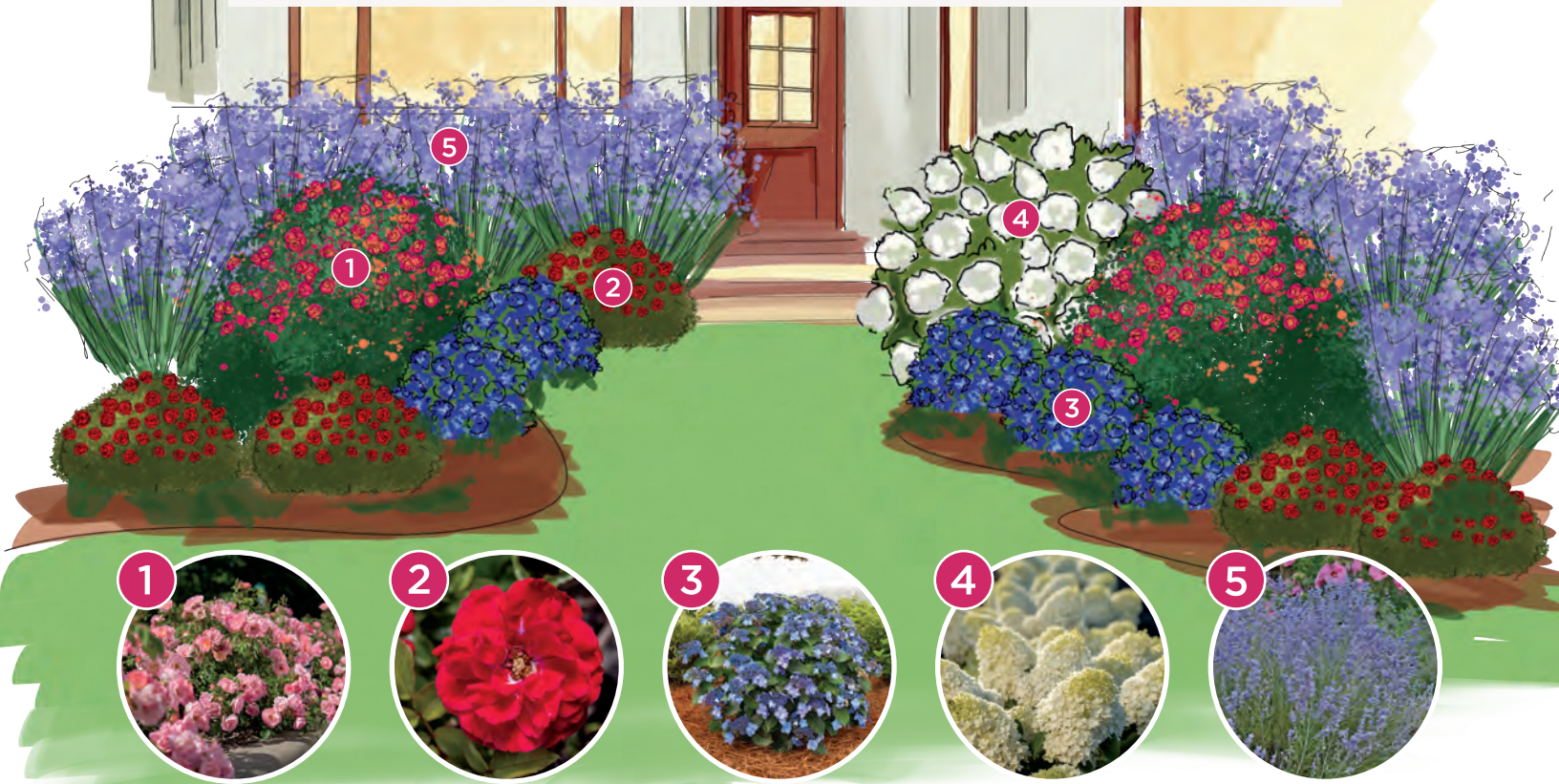


EASY ELEGANCE® IN THE LANDSCAPE: COOL REGIONS

This design features the classic look of roses and hydrangeas. In summer, the showy blooms of Sunrise Sunset Rose (1) and Paint the Town Rose (2) create a mass of bright color. Each rose is an ideal size and color for pairing with other shrubs and perennials.

As the roses bloom, the flowers of Endless Summer® Pop Star® Reblooming Hydrangea (3) emerge to offer stunning shades of electric blue or bright pink (depending on soil pH). First Editions® Little Hottie® Panicle Hydrangea (4) brings structure and height with its pure white blooms high above the foliage.

As fall approaches, the airy blooms of Russian sage (5) bring late season color. During winter, the roses provide structure that adds interest to the bed.



DECO POTS

Our consumer research tells us the majority of home gardeners plant in containers, giving us the opportunity to highlight the benefits of growing Easy Elegance® in deco pots. Many roses in the Easy Elegance® collection remain compact, allowing them to be grown in deco pots by themselves or with seasonal plantings, and can be carried over year-after-year. The long-lasting blooms and clean foliage allow Easy Elegance® to shine throughout the season. Consider planting them with trailing annuals like sweet potato vine, or taller annuals such as purple fountain grass.

HOW TO USE EASY ELEGANCE®

Easy Elegance® roses come in a variety of sizes, shapes, and colors to meet the needs of consumers. Our roses are bred for disease resistance, hardiness, and durability, giving you more options in the landscape.

Whether you're looking for the aesthetics of a hybrid tea rose or the mass appeal of a groundcover, Easy Elegance® has you covered.

CONSUMERS

The Easy Elegance® collection features a palette of colors, ranging from pure white to bright scarlet. These colors can be paired together or grown separately to make a statement in the garden. Some of the roses are multi-colored, giving you a blend of everything.

In addition to color, consumers want plants that offer solutions in their landscape. Easy Elegance® comes in various forms and sizes, allowing consumers to use them in many areas of the landscape.

RETAILERS

Retailers can showcase the versatility of Easy Elegance® in their displays by mixing them with annuals for deco pots or highlighting their many uses in the landscape. The rebloom and disease resistant foliage keep the plants looking good throughout the summer, encouraging impulse sales.



Paint the Town Rose planted in Zone 4.



Coral Cove Rose planted in a decorative container.

GROWERS

For growers, Easy Elegance® requires less input to produce a quality crop, allowing you to spread your labor and spend less time applying chemicals. Another benefit is hardiness, as growers in northern climates have access to a range of cold hardy roses, while growers in warm regions have the assurance of heat tolerant plants.

When it comes to roses, one climate doesn't fit all. To better meet your regional needs, we've broken down Easy Elegance® into categories to give you plants that are suitable for your climate. Our warm-climate varieties have been trialed in temperate climates to ensure they meet our standards of disease resistance and flower power, while our cool-climate varieties continue to thrive in climates with severe winters.

Here are some of our regional favorites:

COOL CLIMATES Zones 3-5	WARM CLIMATES Zones 6-9
<ul style="list-style-type: none"> • All the Rage • Music Box • Oscar Peterson™ • Paint the Town 	<ul style="list-style-type: none"> • High Voltage • Kashmir • My Girl • Sunrise Sunset



NETWORK GROWERS

With a network of quality growers, finished plants are readily available from licensees across North America.

Scan to see our full list and map of licensed growers!

GROWER TIPS & LINER OPTIONS

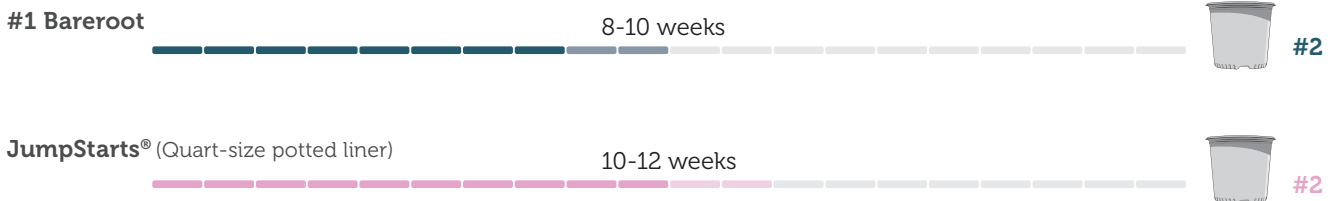
Like any plant, roses have certain requirements to perform well. Here are tips for producing a top quality crop.

Rose Production Tips:

- Give roses full sun during production.
- Incorporate a control-release fertilizer at planting.
- Provide 1" of water per day in summer.
- Planting should be done in spring through fall, with bareroot planting preferred in spring.
- Water in the morning to keep the foliage dry and avoid irrigating at night.
- Regularly monitor for insect and disease pests.
- Apply a rotation of preventative fungicides throughout the season.

Growers know the importance of balancing labor and production timing. To meet your specific needs, Bailey offers several liner options to round out your planting schedule and spread your labor. Bareroot liners are ideal for early season and summer production, while JumpStarts® potted liners can be planted after spring for a late summer and following year crop. Many growers utilize both options to take advantage of the flexibility.

Production Timelines:

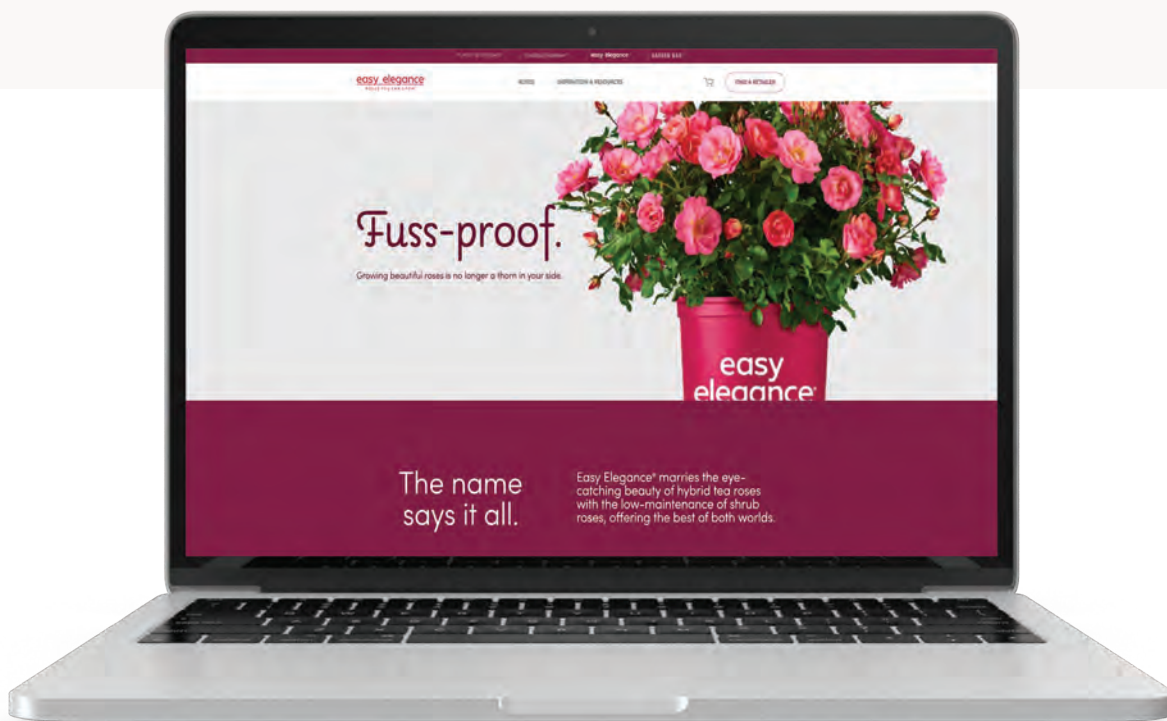


**Please Note: The finishing times for bareroot and JumpStarts® are based on our production schedules in Onarga, IL, while the finishing times for JumpStarts® 5.5 are based on feedback from network partners. Results and timelines will vary depending on climate and other conditions.*

PARTNERING WITH EASY ELEGANCE®

Our assistance doesn't just end at the sale. We care about the consumer and work hard to make sure they have success with Easy Elegance® roses. We know that each bit of support goes a long way to earning the trust of home gardeners, ensuring they search out Easy Elegance® roses and always come back for more.

That's where our customer support tools come in!



THE WHOLE PACKAGE

[EasyEleganceRoses.com](https://www.EasyEleganceRoses.com)

Home to everything home gardeners need to know about our roses. Variety specifics, planting and care tips, seasonal reminders, DIY projects, and so much more are only a click away.

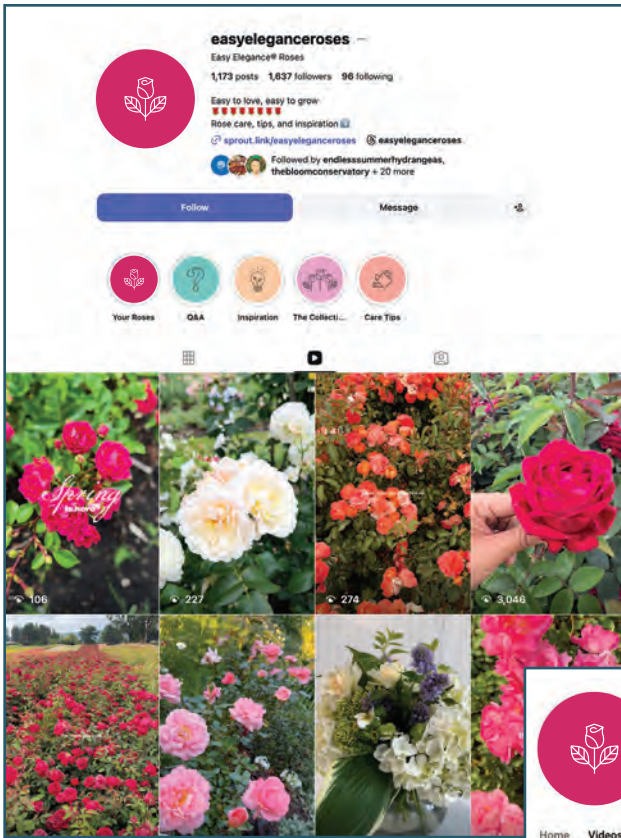
[Resources page at baileynurseries.com](https://www.baileynurseries.com)

When you partner with Easy Elegance® Roses, you can count on us to provide the support and tools you need to have success. We want to simplify your day and make information easy to access, so you can spend less time searching and more time doing.

That's where the Bailey resources page comes in. This is your go-to spot for anything you need related to Easy Elegance®. Find **sell sheets, images, logos, social media content, videos, and more.**



Retailers, make sure that you are listed on our **Find a Retailer** page. Contact us if you are missing!



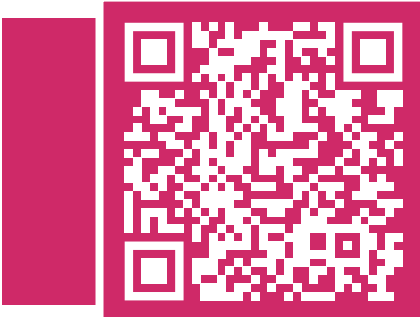
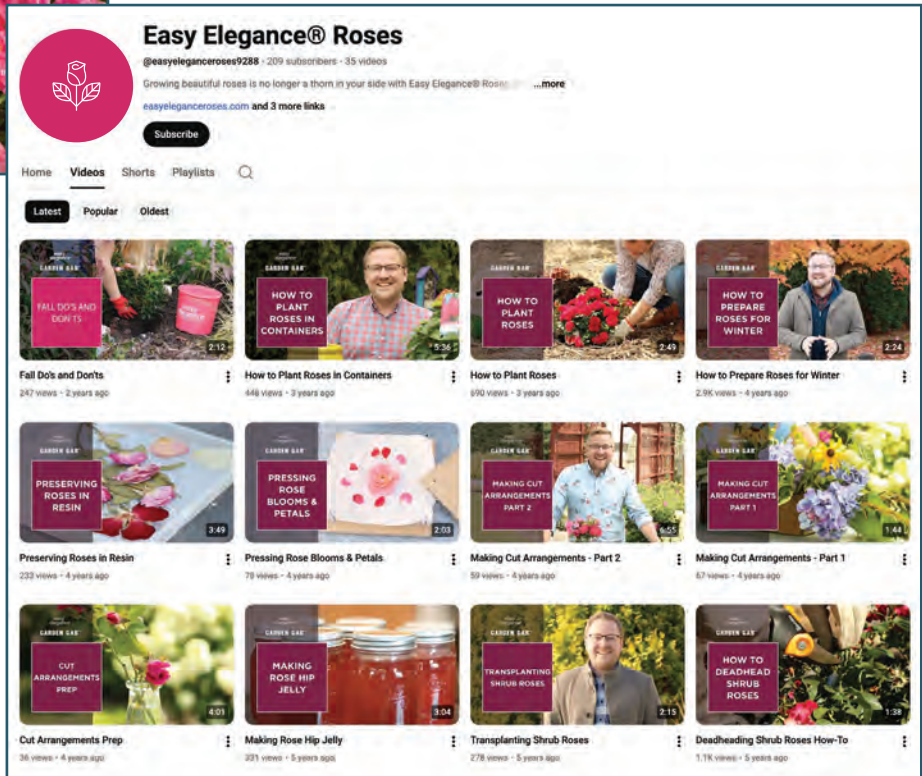
SOCIAL MEDIA

Follow @easyleganceroses for all of the latest! We meet home gardeners where they're at to provide timely tips, tricks, and inspiration to build the rose garden of their dreams.



HAVE PHOTOS OR VIDEOS YOU'RE POSTING THAT FEATURE EASY ELEGANCE® ROSES?

Remember to tag [@easyleganceroses](https://www.instagram.com/easyleganceroses) and use [#easyleganceroses](https://www.instagram.com/easyleganceroses) so we can share the love!



EMAIL NEWSLETTERS

Our monthly newsletters are another fabulous source of information for new and expert rose gardeners alike.

Scan to follow, sign up, and bookmark these consumer resources!

easy
elegance[®]
ROSES YOU CAN GROW[™]



| @EasyEleganceRoses
www.EasyEleganceRoses.com