



FlowerFull® Smooth Hydrangea

FIRST[®]
EDITIONS
SHRUBS & TREES

2024 - 2026
NEW VARIETIES

FIRST[®] EDITIONS

SHRUBS & TREES

First Editions[®] Shrubs & Trees takes the hard work out of yard work. With a passion for plants that are as hard-working as the home gardeners planting them, First Editions[®] has curated a collection that's as fun as it is functional. It's beauty and brawn. From trusted regional favorites to fantastic native selections, each plant has been handpicked for top-notch performance.

But that's not all. First Editions[®] goes the extra mile by introducing plants with better flowering, greater disease resistance, lower maintenance needs, and more. These are plants that truly deliver, year after year. They're plants with purpose.

Plus, they're easy to spot in our distinctive bright purple pots.

So, what's next? The best of the best, of course! Here are the top new plants for 2026, along with standout introductions from recent years. Whether you're looking for show-stopping blooms, unbeatable durability, or effortless performance, you'll find it here. Dig in, enjoy, and let us know how we can support you in bringing these best-in-class genetics to your customers!



2026 INTRODUCTIONS

Spring Sizzle® Panicle Hydrangea	4
Pineapple Tart™ Potentilla	6
PowFume® Viburnum	8



2025 INTRODUCTIONS

FlowerFull® Smooth Hydrangea	10
Trippy Pink® Butterfly Bush.....	10
Big Beauty® Gardenia	12
Violet Mist® Chastetree	12
Courageous™ Crabapple	13
Green Wall Spire™ Crabapple	13



2024 INTRODUCTIONS

Eclipse® Bigleaf Hydrangea	14
Lucky Leu® Leucothoe	14
Honeycomb® Ninebark	15
Queen Bee® Chastetree.....	15

SPRING SIZZLE[®]

PANICLE HYDRANGEA

Hydrangea paniculata 'Bailpanthree' PP36,526

Height: 4-6' | **Width:** 4-5' | **Habit:** Upright, vase
Hardiness Zone: 3-8 | **Heat Zone:** 8 | **Exposure:** Full Sun to Part Shade

One of the earliest blooming panicle hydrangeas on the market

White blooms quickly turn red, even in warm regions

Strong stems hold the panicle blooms upright



COMMERCIAL DESIGN

Looking for a reliable, high-impact shrub for your landscape designs? Spring Sizzle® Panicle Hydrangea is the perfect shrub to help transition your landscape from spring to summer. As the earliest blooming panicle hydrangea on the market, it reliably blooms white and quickly transitions to deep red. Strong, upright stems ensure the flowers stay elevated, resisting wind and rain without drooping.



- Spring Sizzle® Panicle Hydrangea (1)
- Tianshan® Seven-Son Flower (2)
- Lucky Devil® Ninebark (3)
- Blackhawks Big Bluestem Grass (4)

Built for a combination of performance and beauty, Spring Sizzle® is drought tolerant, has improved disease resistance, and even provides cut flowers! These qualities give it the versatility to be used as a hedge, foundation planting, or striking focal point in the landscape. Whether you're working on a residential or commercial project, this low-maintenance, high-impact shrub is a must-have for your landscape designs.



RESIDENTIAL DESIGN



- Spring Sizzle® Panicle Hydrangea (1)
- Iceberg Alley® Sageleaf Willow (2)
- Tianshan® Seven-Son Flower (3)
- Karl Foerster Feather Reed Grass (4)
- Northern Exposure™ Amber Coral Bells (5)

PINEAPPLE TART™

POTENTILLA

Potentilla fruticosa 'Bailpine' PPAF

Height: 2-3' | **Width:** 2-3' | **Habit:** Upright, rounded
Hardiness Zone: 2-6 | **Heat Zone:** 6 | **Exposure:** Full Sun

Golden-yellow double flowers bloom from summer through fall

Deer resistant, cold hardy, and durable for tough sites

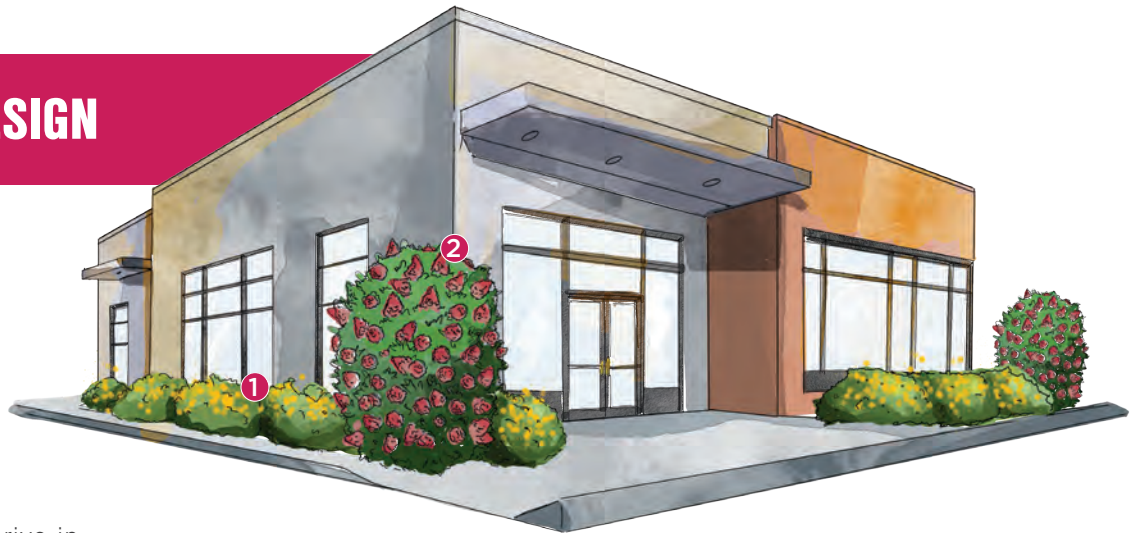
Ideal size for foundation and mass plantings



COMMERCIAL DESIGN

Pineapple Tart™ Potentilla is a compact, high-performance shrub that delivers season long impact with its vibrant golden-yellow double blooms from summer through fall. Designed to thrive in challenging conditions, it's drought-tolerant, deer-resistant, and hardy enough for tough winters. This makes it an ideal choice for low-maintenance landscapes.

This pollinator-friendly native selection is perfectly sized for foundation plantings, mass plantings, and erosion control. Its durability and versatility make it a great option for large-scale commercial projects as well as residential landscapes. Whether used as a focal point in mixed borders or as a functional solution for challenging sites, Pineapple Tart™ delivers reliable performance with minimal upkeep.



Pineapple Tart™ Potentilla (1)
Berry White® Panicle Hydrangea (2)



RESIDENTIAL DESIGN



Pineapple Tart™ Potentilla (1)
Little Hottie® Panicle Hydrangea (2)
Shining Sensation™ Weigela (3)
Tianshan® Seven-Son Flower (4)

POWFUME®

VIBURNUM

Viburnum 'Bailvibone' PPAF

Height: 6-8' | **Width:** 5-7' | **Habit:** Upright, rounded
Hardiness Zone: 6-9 | **Heat Zone:** 9 | **Exposure:** Full Sun

Semi-evergreen shrub with large white, fragrant blooms

Foliage provides long seasonal interest

Flowers are attractive to pollinators

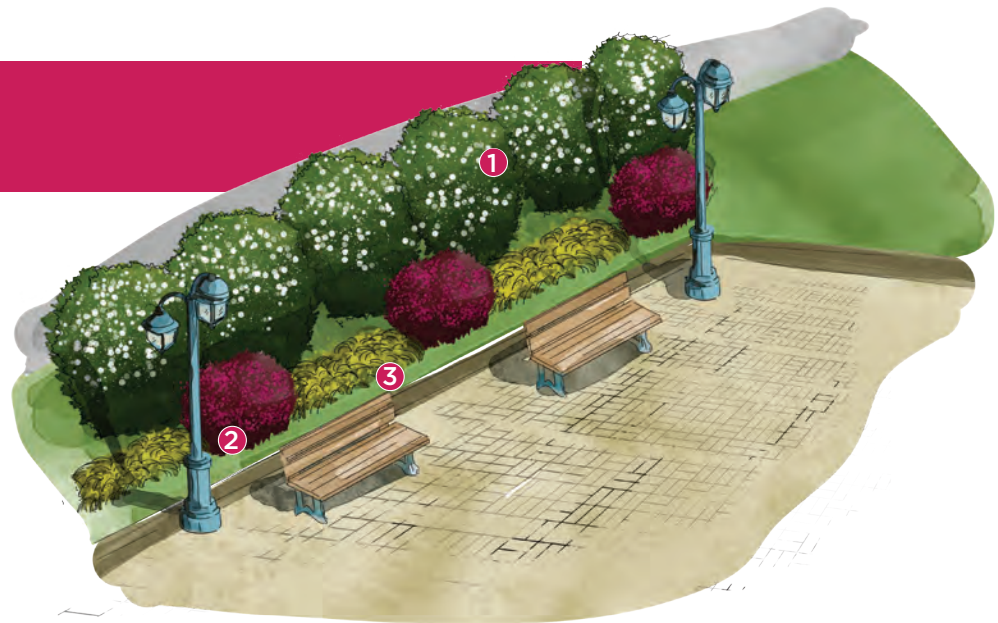


COMMERCIAL DESIGN

PowFume® Viburnum blooms in early spring, blanketed in large, sweetly fragrant white blooms that attract pollinators and delight the senses. These bright pink buds gradually fade to white, offering a strong, pleasant fragrance comparable to popular varieties like ‘Mohawk’ and ‘Cayuga.’

Unlike other fleeting bloomers, PowFume® extends its seasonal interest well beyond the spring, providing lasting beauty and structure. With a dense, upright habit, this semi-evergreen shrub makes an excellent choice for privacy hedges, screening, or as a standout focal point in both residential and commercial landscapes.

Low-maintenance and resilient, it thrives in a range of growing conditions with minimal pruning. Its tough, adaptable nature ensures year-round appeal, even retaining most of its foliage in warmer climates.



PowFume® Viburnum (1)
Crimson Fire™ Fringe Flower (2)
All Gold Japanese Forest Grass (3)



PowFume® Viburnum (1)
Little Hottie® Panicle Hydrangea (2)
Crimson Fire™ Fringe Flower (3)
Northern Exposure™ Red Coral Bells (4)

RESIDENTIAL DESIGN



FLOWERFULL® SMOOTH HYDRANGEA

Hydrangea arborescens 'BALful' PP35,613

Height: 3-4'

Width: 4-5'

Hardiness Zone: 3-8

Heat Zone: 8

Habit: Rounded

Exposure: Full Sun to Part Shade

- Produces two-to-three times more blooms per season than others
- Features strong stems that don't flop in the wind and rain
- Lush green foliage that provides wonderful contrast to the blooms



TRIPPY PINK® BUTTERFLY BUSH

Buddleia davidii 'Bailbudone' PPAF

Height: 6-8'

Width: 6-8'

Hardiness Zone: 5-9

Heat Zone: 9

Habit: Rounded to upright

Exposure: Full Sun

- Covered in stunning hot pink flowers that bloom in summer
- Flowers are filled with nectar and irresistible to various pollinators
- An ideal low-maintenance shrub for small landscapes

FLOWERFULL[®]

SMOOTH HYDRANGEA



Produces two-to-three times more blooms (left) per season than other smooth hydrangeas (right)



Features strong stems that don't flop in the wind and rain

Lush green foliage that provides wonderful contrast to the blooms



FLOP? NOT TODAY!



BIG BEAUTY® GARDENIA

Gardenia jasminoides 'Baieldeniaone' PP36,284

Height: 6-7'

Width: 6-7'

Hardiness Zone: 7-9

Heat Zone: 9

Habit: Rounded

Exposure: Full Sun to Part Shade

- Fragrant, double blooms cover the plant in summer
- Features a naturally round shape that requires minimal pruning
- A larger gardenia perfect for hedges or foundation plantings



VIOLET MIST® CHASTETREE

Vitex agnus-castus 'Bailtexfour' PP36,066

Height: 3-4'

Width: 3-4'

Hardiness Zone: 5-9

Heat Zone: 9

Habit: Rounded

Exposure: Full Sun

- Blue-purple flowers bloom in early summer through fall
- The flowers are a favorite for pollinators in the garden
- The compact size makes it ideal for small or urban landscapes



COURAGEOUS™ CRABAPPLE

Malus x 'Durlawrence'

Height: 20-25' **Width:** 15-20'
Hardiness Zone: 2-7 **Heat Zone:** 7
Habit: Upright, rounded **Exposure:** Full Sun

- Early blooming variety with very fragrant, lilac-pink blooms
- Boasts an upright, natural form that looks good in every season
- Has beautiful orange-yellow fall color, and little to no fruit in winter

GREEN WALL SPIRE™ CRABAPPLE

Malus x adstringens 'Jefwall' PP35,109

Height: 18-20' **Width:** 5-6'
Hardiness Zone: 2-8 **Heat Zone:** 8
Habit: Columnar **Exposure:** Full Sun

- Features a columnar form with beautiful white flowers in spring
- Has bronze fall foliage and red winter fruit
- Excellent tree for hedges



ECLIPSE® BIGLEAF HYDRANGEA

Hydrangea macrophylla 'Bailmacseven' PP34,544
US Patent Pending

Height: 3-5'

Width: 3-5'

Hardiness Zone: 5-9

Heat Zone: 9

Habit: Mounded

Exposure: Morning Sun, Part Shade

- Intense dark purple leaves hold their color even in sunny warm climates
- Cranberry- or amethyst-colored blooms make dramatic impact
- Perfect as a focal point in the garden or in decorative containers



LUCKY LEU® LEUCOTHOE

Leucothoe axillaris 'Bailcothoe'

Height: 3-5'

Width: 3-5'

Hardiness Zone: 6-9

Heat Zone: 9

Habit: Mounded

Exposure: Full Sun to Part Shade

- Peach-orange new growth is accented by white flowers in spring
- Low-maintenance shrub that maintains shape with little to no pruning
- Native to North America, this species thrives in both sun and part shade



HONEYCOMB[®] NINEBARK

Physocarpus opulifolius 'ZLENora' PP34,624

Height: 4-6'

Width: 5-7'

Hardiness Zone: 3-7

Heat Zone: 7

Habit: Upright, arching

Exposure: Full Sun to Part Shade

- Large, vibrant, chartreuse leaves hold their color all season long
- White flowers in spring and gold leaves in fall provide interest
- Makes a beautiful hedge or color block along a fence line



QUEEN BEE[®] CHASTETREE

Vitex agnus-castus 'Bailtexthree' PP35,259

Height: 5-6'

Width: 7-9'

Hardiness Zone: 5-9

Heat Zone: 9

Habit: Rounded

Exposure: Full Sun

- Vibrant, lavender flowers bloom in mid-June and are adored by pollinators
- Low-maintenance shrub with impressive drought, heat, and cold tolerance
- Ideal colorful hedge or focal point in warm climate gardens

FIRST[®]
EDITIONS
SHRUBS & TREES

GET SOCIAL!

@FirstEditionsShrubsTrees



WWW.FIRSTEDITIONSPLANTS.COM