

FIRST[®]
EDITIONS

SHRUBS & TREES

ECLIPSE[®]

BIGLEAF HYDRANGEA

YOUR GUIDE TO THIS GROUNDBREAKING ROCK STAR



IT'S AN ECLIPSE® WORTH STARING AT

Meet Eclipse® Bigleaf Hydrangea, the first true dark-leaf mophead hydrangea that is sure to bring the drama to the garden. What makes this hydrangea stand out from all the rest? We'll tell you!

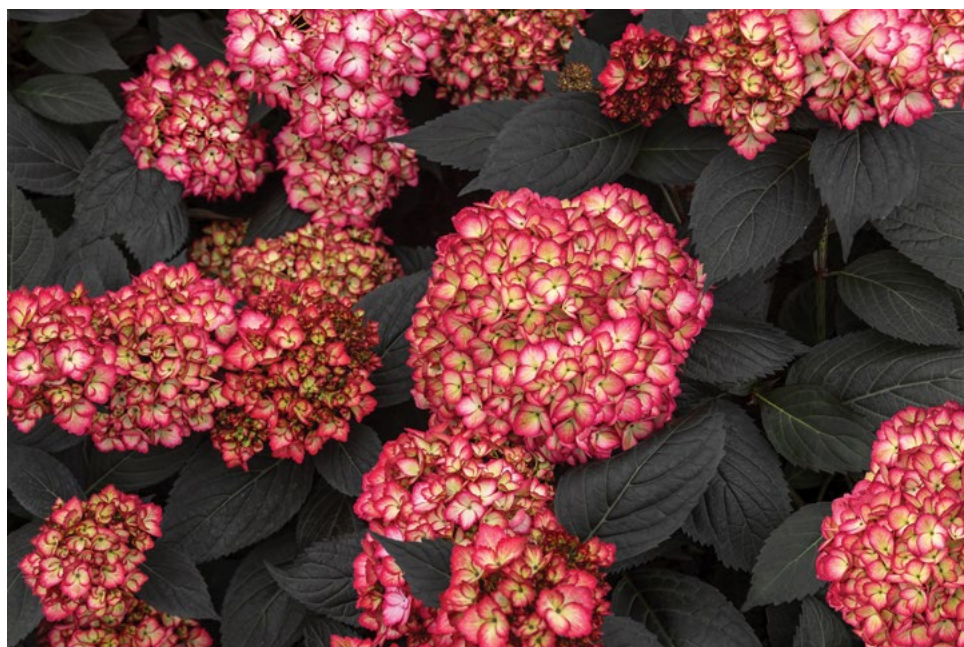
- **The Leaves**

The dark purple - almost black - foliage is nothing you've ever seen before. And it stays dark all season long, year after year!

- **The Blooms**

Eclipse® has spectacular cranberry or amethyst-colored blooms that provide fantastic contrast to the dark leaves and will rebloom throughout the season.

Keep reading to learn all about this one-of-a-kind hydrangea, get planting and care tips, and learn why gardening with hydrangeas has never looked so cool.



BRING ON THE BOLD

Maturing at 3-5 feet tall and wide, Eclipse® is bound to make an impact in the landscape. Whether you plant Eclipse® with bright shrubs to make it stand out as a focal point, plant a couple in a row to create a dark hedge, or pair it with complementary low-growing perennials, you can count on Eclipse® to make a bold statement.

WELCOME TO THE NEW WORLD OF HYDRANGEAS

Say goodbye to the old way of thinking about hydrangeas and say hello to gardening with Eclipse®.

No matter if it's planted as a hedge or mixed in with other shrubs, Eclipse® will make its presence known in the landscape.

With leaves and blooms like this, Eclipse® is begging to be used in cut arrangements.



Don't leave your deco pots out of the fun! Plant this trendsetter in decorative containers to add dramatic color to your front entry, patio, or porch.

ECLIPSE®

BIGLEAF HYDRANGEA

Hydrangea macrophylla 'Bailmacseven'
PP34,544 US Patent Pending

ZONE: 5-9 | HEIGHT: 3-5' | WIDTH: 3-5'

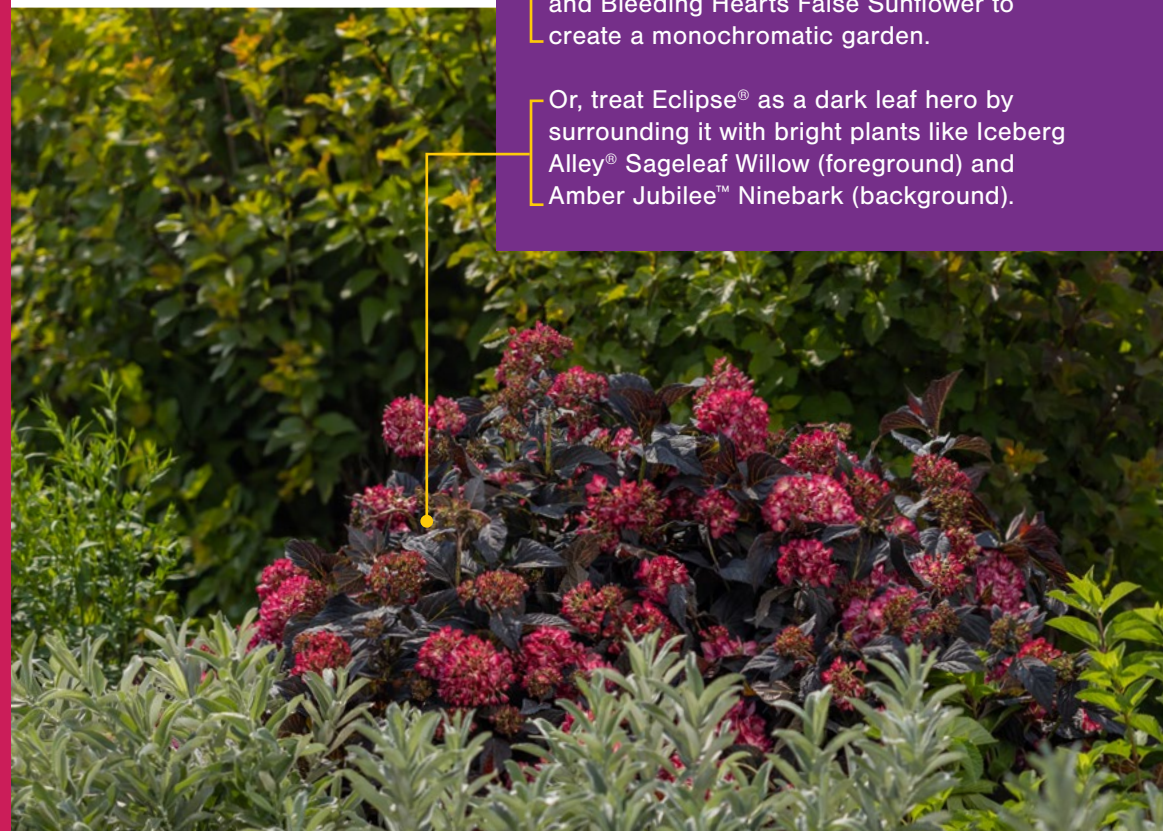
EXPOSURE: MORNING SUN, AFTERNOON SHADE



TREND ALERT: GARDENING IN DARK MODE

Pair Eclipse® with other dark-hued plants like Northern Exposure™ Black Coral Bells and Bleeding Hearts False Sunflower to create a monochromatic garden.

Or, treat Eclipse® as a dark leaf hero by surrounding it with bright plants like Iceberg Alley® Sageleaf Willow (foreground) and Amber Jubilee™ Ninebark (background).





BEST BUDS FOR ECLIPSE®

Ready to use Eclipse® in your space but wondering what to plant with it? Try these Best Buds that will make designing with Eclipse® a breeze.



**ECLIPSE®
+ PARKLAND PILLAR® BIRCH**

ZONES 5-7
Looking for a vertical accent? This tree will do that while contrasting the dark leaves on Eclipse® from summer through fall.



**ECLIPSE®
+ COBALT-N-GOLD™ HYPERICUM**

ZONES 5-7
The finely textured blue-green foliage and yellow flowers will shine bright against the dark leaves on Eclipse®.



**ECLIPSE®
+ CAMPFIRE ROSE**

ZONES 5-7
This low-growing rose will provide gorgeous complementary pops of yellow and deep pink.



**ECLIPSE®
+ TIGER EYES® CUTLEAF STAGHORN SUMAC**

ZONES 5-8
Looking for a sharp color contrast? The chartreuse leaves in summer and orange leaves in fall will do just that.



**ECLIPSE®
+ LITTLE SPARK® SPIREA**

ZONES 5-8
Compact and bursting with yellow and pink, this spirea will make the dark hues from Eclipse® stand out.



**ECLIPSE®
+ SAPPHIRE SURF™ BLUEBEARD**

ZONES 5-9
Need some late-season interest? The blue flowers will emerge in late summer, providing incredible contrast.



**ECLIPSE®
+ FIBER OPTICS® BUTTONBUSH**

ZONES 5-9
This large shrub features a unique texture and interesting blooms that will pair gorgeously with the blooms on Eclipse®.



**ECLIPSE®
+ CENTENNIAL BLUSH STAR MAGNOLIA**

ZONES 5-9
The early season pink blooms add seasonal interest, echoing the subsequent cranberry blooms on Eclipse®.



**ECLIPSE®
+ CINNAMON GIRL® DISTYLUM**

ZONES 7-9
This low-growing evergreen has plum-purple new growth, which will look amazing with the dark purple leaves on Eclipse®.



**ECLIPSE®
+ DOUBLE MINT GARDENIA**

ZONES 7-9
Add contrast to the dark leaves and blooms on Eclipse® with this shrub that features fragrant, reblooming white flowers.

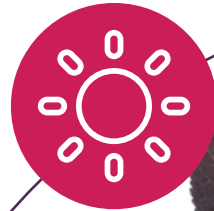
HOW TO CARE FOR ECLIPSE®



Caring for Eclipse in a container? Have other planting or care questions? Scan here!

EXPOSURE

Plant Eclipse® in a spot that receives morning sun and dappled afternoon shade. This mix of sun and shade will help your plant stay healthy and keep those blooms coming.



SOIL

Eclipse® will thrive when planted in soil that is well drained and rich in nutrients. But don't worry if that's not the type of soil you're working with. If that's the case, amend your soil before planting to help Eclipse® settle in.



WATER

Always check the soil before watering and only water when the soil is drying out. When you do, give Eclipse® a good soak. And don't water from above. Instead, water at the base of the plant and the ground underneath the entire width of stems, called the dripline.



FERTILIZING

While Eclipse® will naturally rebloom, applying fertilizer at key times will help make this hydrangea shine. Pick up a bloom boosting, slow-release, granular fertilizer and follow the directions on the packaging for how much to apply. Apply once in early spring when new leafy growth appears, and again in late June or early July to help promote the rebloom.



PRUNING

Eclipse® blooms on both old and new wood, so be careful about how and when you prune. In late spring, only prune off any brown stems that didn't survive winter. As blooms fade in the summer, feel free to deadhead. Cut the bloom off just below the flower and above the next set of alternating leaves. Deadhead throughout the summer and never prune in fall.



WINTERIZING

With hardiness through Zone 5, Eclipse® is already equipped to survive the winter. But you can help your plant along by watering until a hard freeze and adding winter protection like oak leaves, mulch, or pine needles around the base of the plant. This is especially important for newly planted shrubs.



HOW TO PLANT ECLIPSE® IN FOUR EASY STEPS

STEP 1:

Pick a spot that will: fit Eclipse® when it's full grown at 3-5 feet tall and wide, receive morning sun and dappled afternoon shade, and where the soil is well-drained and rich in nutrients. If needed, amend your soil now.

STEP 2:

Grab a shovel and dig a hole that's slightly larger than the pot Eclipse® came in and deep enough so the base of where the plant meets the soil is flush to the ground.

STEP 3:

Place Eclipse® in the middle of that hole and fill in with soil.

STEP 4:

With a garden hose, give Eclipse® a good drink of water. Let the water soak in and water it once more.



GARDENING CALENDAR



SPRING

- Remove winter protection after the final freeze. Do the same for any decorative containers you overwintered.
- Start watering.
- Apply bloom boosting fertilizer once you see new leafy growth.
- In late spring, prune stems that didn't survive winter. Look for buds that are brown and crunchy and prune just above the last live bud on the stem.
- Plant new Eclipse® in the landscape and in decorative containers.



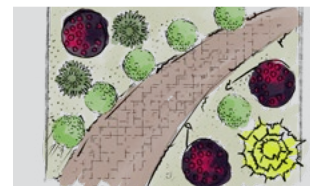
SUMMER

- Deadhead spent blooms throughout the summer.
- Cut leaves and blooms on Eclipse® for unique cut arrangements from the garden.
- Continue to water, but only doing so when the soil is drying out.



FALL

- Stop fertilizing and deadheading.
- Plant new Eclipse® in the landscape, getting them in the ground at least five to six weeks before the first frost.
- Continue to water Eclipse® until a hard freeze.
- In late fall, add oak leaves, mulch, or pine needles around the base to protect the crown of the plant.



WINTER

- Start planning how to feature Eclipse® in next year's garden!

OUR STORY

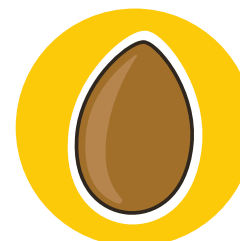
First Editions® Shrubs & Trees is home to over 100 unique plants that have been trialed and tested to ensure that you have success with our plants. But, where do you start when you've got so many options? That's where our Rock Stars come in. First Editions® Rock Stars are the best of the best. They're plants we know will thrive in your space, so you can spend less time worrying and more time enjoying.

Eclipse® Bigleaf Hydrangea is not only the newest plant in our collection, but it's the newest Rock Star. And we've been working with Eclipse® for quite some time to validate that designation. Get a peek behind the scenes to learn more about this game-changing hydrangea and all the work our team put into making sure you have success with Eclipse®.

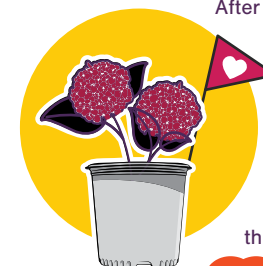
MEET THE BREEDER

This is David Roberts, our Director of Plant Breeding and the driving force behind Eclipse®. David made the initial cross and, with his team, worked on selecting, testing, trialing, and eventually introducing the plant that is now Eclipse®. He was there every step of the way, making Eclipse® what it is today!

FROM A SEED TO THE LANDSCAPE: INTRODUCING ECLIPSE®



The process begins! The first seed from hydrangea crosses are collected, sown, and germinated. Those plants are allowed to grow, and selections are made that show impressive dark leaf color.

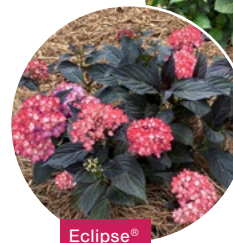


After narrowing down the hydrangeas to those with the darkest foliage, trials are conducted to see which ones retain their color the longest. One hydrangea stands out as being far darker than the rest.

2016

2018

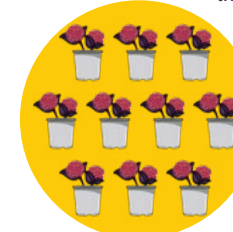
Comparison Variety



Eclipse®

To ensure Eclipse® is a Rock Star in the landscape, internal and external trials with partners across the United States continue. Comparison trials begin. When planted next to other dark-leaf hydrangeas, Eclipse® retains its dark leaves while others turn green over time.

Trials to test the rebloom time, identify any diseases, and cold hardiness test begin. Due to its dark leaves eclipsing the other dark leaf hydrangeas on trial, this hydrangea is named Eclipse®!



2021

2019



As trials continue to show Eclipse® thriving across the United States, Eclipse® is introduced to the horticulture world. First Editions® partners start to grow Eclipse®, ensuring the plant is available consistently across North America and worldwide.



2023

2024

After eight years of breeding, trialing, and testing, Eclipse® is finally available to home gardeners like you!



YOU'VE GOT MAIL

Sign up for the First Editions® newsletter for all the latest tips and inspiration straight to your inbox.

GET SOCIAL

Need timely tips for the garden or inspiration for your next garden project? Follow us for all that and so much more!



@FirstEditionsShrubsTrees

WANT MORE?

The First Editions® website is your one-stop-shop for all your shrub and tree needs. Browse through our plant collection and check out our blog for inspiration, care tips, and planting help.



FIRSTEDITIONSPLANTS.COM



GARDEN GAB™

You've got plant questions, we've got answers. Garden Gab™ is our video series that provides all the answers you need to have success with your First Editions®. Whether it's tips on planting and care, or suggestions for what to plant in your space, Garden Gab™ has got your back.



Don't see the answer to your question? Scan to submit your own question at garden-gab.com to receive a personalized response from our plant expert Ryan!



OUR BRANDS

Gardening is more fun when you've got friends, and we've got some pretty great ones. Check out our friends at Endless Summer® Hydrangeas and Easy Elegance® Roses for spectacular hydrangeas and roses to add to your space.



FIRSTEDITIONSPLANTS.COM

@FirstEditionsShrubsTrees

